



# SAILING INSTRUCTIONS

## Delta Lloyd Open Dutch Championships 2017

September 15 – 17, 2017 at the IJsselmeer, off Medemblik

### Open Dutch Championships for the following classes:

Finn, Laser Standard, Laser Radial, Yngling, J22 and F18

### Class Championships for the following classes:

49er, 49erFX(open), 29er, RS500, Contender, Melges24, SB20 and Moth

### Class event for:

Laser 4.7

### Organizing authority

The Royal Netherlands Yachting Union in conjunction with RYC Hollandia and Sportivents

- [DP] denotes a rule for which the penalty is at the discretion of the Jury  
[NP] denotes that a breach of this rule will not be grounds for a protest by a boat.  
[SP] denotes a rule for which a standard penalty may be applied by the race committee or the protest committee without a hearing

## 1 RULES

- 1.1 The regatta will be governed by the rules as defined in *The Racing Rules of Sailing*.
- 1.2 [DP] The prescriptions of the Royal Netherlands Yachting Union (RNYU) will apply.  
See website:  
[http://www.sailing.org/documents/racingrules/national\\_prescriptions.php](http://www.sailing.org/documents/racingrules/national_prescriptions.php)
- 1.3 The 'Rules for Championships Sailing, Windsurfing and Kiteboarding' will apply.
- 1.4 [DP] No class rules will be changed under RRS 87. Except for SB20-class:  
C5.1 Safety Equipment, see Attachment III of the Notice of Race.
- 1.5 [DP] Competitors shall wear personal flotation devices at all times while afloat, except briefly while adjusting clothing or personal equipment. Flag Y will not be displayed. This changes RRS 40.
- 1.6 The sailing instructions will override the Notice of Race if the two conflict. This changes RRS 63.7.
- 1.7 [DP] Competitors and support persons shall comply with any reasonable request made by a race official.
- 1.8 Add RRS 64.4 to the list of rules in RRS 63.1.
- 1.9 If there is a conflict between languages the English text will take precedence.
- 1.10 For RS500: Rule 31 RRS is changed so that marks other than starting and finishing marks may be touched but not manhandled without a penalty.

## 2 NOTICE TO COMPETITORS

Notices to competitors will be posted on the official notice board(s) located near the race office.

## 3 CHANGES TO THE SAILING INSTRUCTIONS

- 3.1 Any change to the Sailing Instructions will be posted before 0900 on the day it will take effect, except that any change to the schedule of races will be posted by 2100 on the day before it will take effect.
- 3.2 Reassignment of classes to racing areas will be posted before 0900 on the day it will take effect.



#### 4 SIGNALS MADE ASHORE

- 4.1 Signals made ashore will be displayed at the main flagpole near the race office. When a signal is displayed over a class flag it applies to that class only.
- 4.2 When flag AP is displayed ashore, '1 minute' is replaced with 'not less than 45 minutes' in the race signal AP.

#### 5 FORMAT OF RACING

- 5.1 For all classes the regatta consist of a single series.
- 5.2 The following classes will race together in one fleet:
  - Laser Radial class: Laser Radial Men, Laser Radial Women and Laser Radial Masters
  - Laser Standard class: Laser Standard and Laser Standard Masters
  - Finn class: Finn and Finn Masters

#### 6 SCHEDULE OF RACES

- 6.1 See Attachment B.
- 6.2 To alert boats that a race or sequence of races will begin soon, the orange line starting flag will be displayed on the race committee signal vessel with one sound at least five minutes before a warning signal is made.
- 6.3 On the last day of the regatta no warning signal will be made after 1600.

#### 7 CLASS FLAGS

Class	Flag
Finn	White with class insignia
Laser Standard	White with class insignia
Laser Radial	Light blue with class insignia
Laser 4.7	Code flag 'T'
Melges24	Code flag 'V'
SB20	Code flag 'E'
Yngling	White with class insignia
J22	Code flag 'J'
Contender	Red/white flag
Moth	Yellow/white flag
F18	Blue/white flag
RS500	Green flag
29er	Blue with class insignia
49er	White with class insignia
49erFX	Light blue with class insignia

#### 8 RACING AREAS

- 8.1 Attachment A shows the location of the racing areas.
- 8.2 Classes are assigned to the racing areas as shown in Attachment B.

#### 9 THE COURSES

- 9.1 The diagrams in Attachment C show the courses, including the approximate angles between legs, the order in which marks are to be passed and the side on which each mark is to be left. The length of the course will be set to meet a target time as mentioned in SI 15 for the first boat of each fleet to finish.
- 9.2 No later than the warning signal, the race committee signal vessel will display the approximate compass bearing of the first leg.



## 10 MARKS

10.1 Marks are not numbered and will be as follows:

Course Area	Marks
Orange	Orange Conical Mark 5 Blue Conical
Red	Red Cylindrical
Green	Green Cylindrical
Yellow	Yellow Cylindrical Mark 2 Blue Conical

10.2 The starting and finishing marks will be:

Starboard-end starting mark:	A staff displaying an Orange Flag on the Race Committee Vessel
Port-end starting mark:	A dan buoy or- if the race committee so decides - a race committee vessel, with a staff displaying an Orange Flag.
Finish marks:	See description in Attachment C.

10.3 A race committee vessel signalling a change of a leg of the course is a mark as provided in SI 12.2.

## 11 THE START

11.1 The starting line will be between the staffs displaying orange flags on the starting marks.

11.2 [DP][NP] Boats whose warning signal has not been made shall avoid the starting area. The starting area is defined as a rectangle 50 meters from the starting line in all directions.

11.3 A boat starting later than five (5) minutes after her starting signal will be scored Did Not Start without a hearing. This changes RRS A4 and A5.

## 12 CHANGE OF THE NEXT LEG OF THE COURSE

12.1 To change the next leg of the course, the race committee will move the original mark (or the finishing line) to a new position.

12.1 Except at a gate, boats shall pass between the race committee vessel signalling the change of the next leg and the nearby mark, leaving the mark to port and the race committee vessel to starboard. This changes RRS 28.1.

## 13 THE FINISH

13.1 Except for the yellow course, the finishing line will be between the staffs displaying orange flags on the finishing marks.

13.2 On the yellow course, the finishing line will be between a black checkered mark at the port end and the staff displaying a black and white checkered flag on the race committee signal vessel at the starboard end.

13.3 For Moth Class only: When the first boat is finished, the race committee will hoist a blue flag on the finish boat. When the leading boat completes the course and finishes, all boats that cross the finish line within 20 minutes after the leading boat has finished, shall be deemed to be finishing irrespective of the number of laps they have completed. Their position in the race will be noted from their finishing order and number of completed laps, with those having the most laps being recorded ahead of those with less completed laps. This means that boats that have only completed 1 lap shall be ranked behind boats which have completed the whole course.



## 14 PENALTY SYSTEM

For the 49er, 49erFX, 29er, RS500, Moth, F18, Yngling, SB20, Melges24 and J22 classes only, the Two-Turns Penalty as described in RRS 44.1 is replaced by the One-Turn Penalty (including one tack and one gybe).

## 15 [NP] TIME LIMITS AND TARGET TIMES

15.1 Time limits and target times are as follows:

Class	Mark 1 Time limit	Time limit	Target time
29er, 49er, 49erFX, RS500, Moth	15 min.	45 min.	30 min.
Finn, Laser Standard, Laser Radial, Laser 4.7, Contender, Yngling, F18	20 min.	60 min.	45 min.
SB20, Melges24, J22	20 min.	75 min.	50 min.

If no boat has passed Mark 1 within the Mark 1 Time limit the race will be abandoned. Failure to meet the target time will not be grounds for redress. This changes rule 62.1(a).

- 15.2 Boats in all classes, except classes mentioned in instruction 15.3, failing to finish within 20 minutes after the first boat of her fleet sails the course and finishes will be scored Did Not Finish without a hearing. This changes RRS 35, A4 and A5.
- 15.3 Boats in 29er, 49er, 49erFX and RS500 class failing to finish within 10 minutes after the first boat of her fleet sails the course and finishes will be scored Did Not Finish without a hearing. This changes RRS 35, A4 and A5.

## 16 PROTESTS AND REQUESTS FOR REDRESS

- 16.1 Protest forms are available at the race office at the Regatta Center Medemblik. Protests and requests for redress or reopening shall be delivered there within the appropriate time limit.
- 16.2 For each fleet the protest time limit is 60 minutes after the last boat has finished the last race of the day or after instruction 15.2 has been applied to that race or the race committee signals no more racing today, whichever is later.
- 16.3 Notices will be posted within 30 minutes of the protest time limit to inform competitors of hearings in which they are parties or named as witnesses.
- 16.4 Notices of protests by the race committee, technical committee or protest committee will be posted to inform boats under RRS 61.1(b).
- 16.5 Breaches of instructions marked with [NP] will not be grounds for a protest by a boat. This changes RRS 60.1(a). Penalties for these breaches may be less than disqualification if the protest committee so decides.
- 16.7 On the last scheduled day of racing a request for redress from a protest committee decision shall be delivered no later than 30 minutes after the decision was posted. This changes RRS 62.2.

## 17 SCORING

- 17.1 Four (4) races are required to be completed to constitute a series.
- 17.2 a) When fewer than five (5) races have been completed, boat's series score will be the total of her races scores.
- b) When five (5) to ten (10) races have been completed, a boat's series score will be the total of her race scores excluding her worst score.
- c) When eleven (11) or more races have been completed, a boat's series score will be the total of here race scores excluding her two worst scores.
- 17.3 To request correction of an alleged error in posted race or series results, a boat may complete a scoring enquiry form available at the race office.
- 17.4 For Moth class only: Boats who cross the finishline and only sail one round



## **18 [DP][NP] SAFETY REGULATIONS**

- 18.1 A boat that retires from a race shall notify the race committee as soon as possible.
- 18.2 Boats not leaving the harbor for a day's race shall inform the race committee prior to the warning signal.
- 18.3 If any of the race signals 'AP over A' or 'AP over H' or 'N over A' or 'N over H' is made on a race committee vessel, all boats assigned to that racing area shall return to the harbor immediately.

## **19 [DP] REPLACEMENT OF CREW OR EQUIPMENT**

- 19.1 Substitution of competitors will not be allowed without prior written approval of the race committee.
- 19.2 [SP] Substitution of damaged or lost equipment will not be allowed unless authorized by the race committee. Requests for substitution shall be made to the race committee at the first reasonable opportunity.

## **20 [DP] [NP] EQUIPMENT AND MEASUREMENT CHECKS**

A boat or equipment may be inspected at any time for compliance with the class rules and SI. On the water, a boat can be instructed by a member of the race committee or technical committee to proceed immediately to a designated area for inspection.

## **21 [DP] [NP] EVENT ADVERTISING**

Boats may be required to display sponsor advertising for the duration of the even in accordance with World Sailing Regulation 20. These items will be supplied free of charge by the Organizing Authority.

## **22 [NP] OFFICIAL BOATS**

Official boats will fly event flags or a flag with 'RC'.

## **23 [DP][NP] SUPPORT BOATS**

- 23.1 Except at the request of the race committee, team leaders, coaches and other support persons shall stay at least 100 meters outside areas where boats are racing from the time of the preparatory signal for the first fleet to start until boats have finished or the race committee signals postponement, general recall or abandonment.
- 23.2 The penalty failing to comply with this requirement will be the disqualification of or, at the discretion of the protest committee, other disciplinary actions against all boats associated with the support persons who do so.
- 23.3 All support boats shall register at the race office.
- 23.4 Support boats shall be marked with the applicable National Sail Letters (see RRS G1.1) clearly displayed on both sides of the boat in strongly contrasting colours or conspicuously display the flag of the country they represent at all times while afloat. Minimum height of the letters shall be 200 mm.

## **24 [DP][NP] TRASH DISPOSAL**

Trash may be placed aboard support and race committee boats.

## **25 [DP] BERTHING**

Boats shall be kept in their assigned places in the boat park or harbor.

## **26 [DP] HAUL-OUT RESTRICTIONS**

Keelboats shall not be hauled out during the regatta except with and according to the terms of prior written permission of the race committee.



## 27 [DP] DIVING EQUIPMENT AND PLASTIC POOLS

Underwater breathing apparatus and plastic pools or their equivalent shall not be used around keelboats between the preparatory signal of the first race and the end of the regatta.

## 28 [DP] RADIO COMMUNICATION

- 28.1 Except in an emergency, a boat that is racing shall not make voice or data transmissions and shall not receive voice or data communication that is not available to all boats.
- 28.2 For the Melges24 and SB20 class only: Race information will be given on VHF channel 8.
- 28.3 Boats may use their smartphones or other tracking devices to track their races with the I-sail app. Other voice or data communication is not allowed.

## 29 PRIZES

- 29.1 Helmsman and crew of the winning boat of the open Dutch championship acquire the title 'Dutch Champion' and receive the accompanying medal(s) of the RNYU. The responsible person of the winning boat acquires the Blue Pennant of the RNYU. Helmsman and crew of the second and third ranked boat in the championship acquire also medal(s) of the RNYU.
- 29.2 Helmsman and crew of the winning boat of the class championship acquire the title 'Class Champion'. The responsible person of the winning boat acquires the Red Pennant of the RNYU. Helmsman and crew of the first, second and third ranked boat in the championship acquire also medal(s).
- 29.3 For the Class events the prizes are as follows:  
Prizes will be given to every member of the crew of the first, second and third ranked boat in the championship.

## 30 DISCLAIMER OF LIABILITY

Competitors participate in the regatta entirely at their own risk. See RRS 4, Decision to Race. The organizing authority will not accept any liability for material damage or personal injury or death sustained in conjunction with or prior to, during, or after the regatta.

## 31 [DP] [NP] INSURANCE

Each participating boat shall be insured with valid third-party liability insurance with a minimum cover of EURO 1,500,000 per event or the equivalent.

## 32 RIGHTS TO USE NAME AND LIKENESS

By participating in this event, competitors automatically grant to the organizing authority and the event sponsors the right, in perpetuity, to make, use, and show, at their discretion, any photography, audio and video recordings, and other reproductions of them made at the venue or on the water from the time of their arrival at the venue, until their final departure, without compensation.

## 34 OFFICIALS

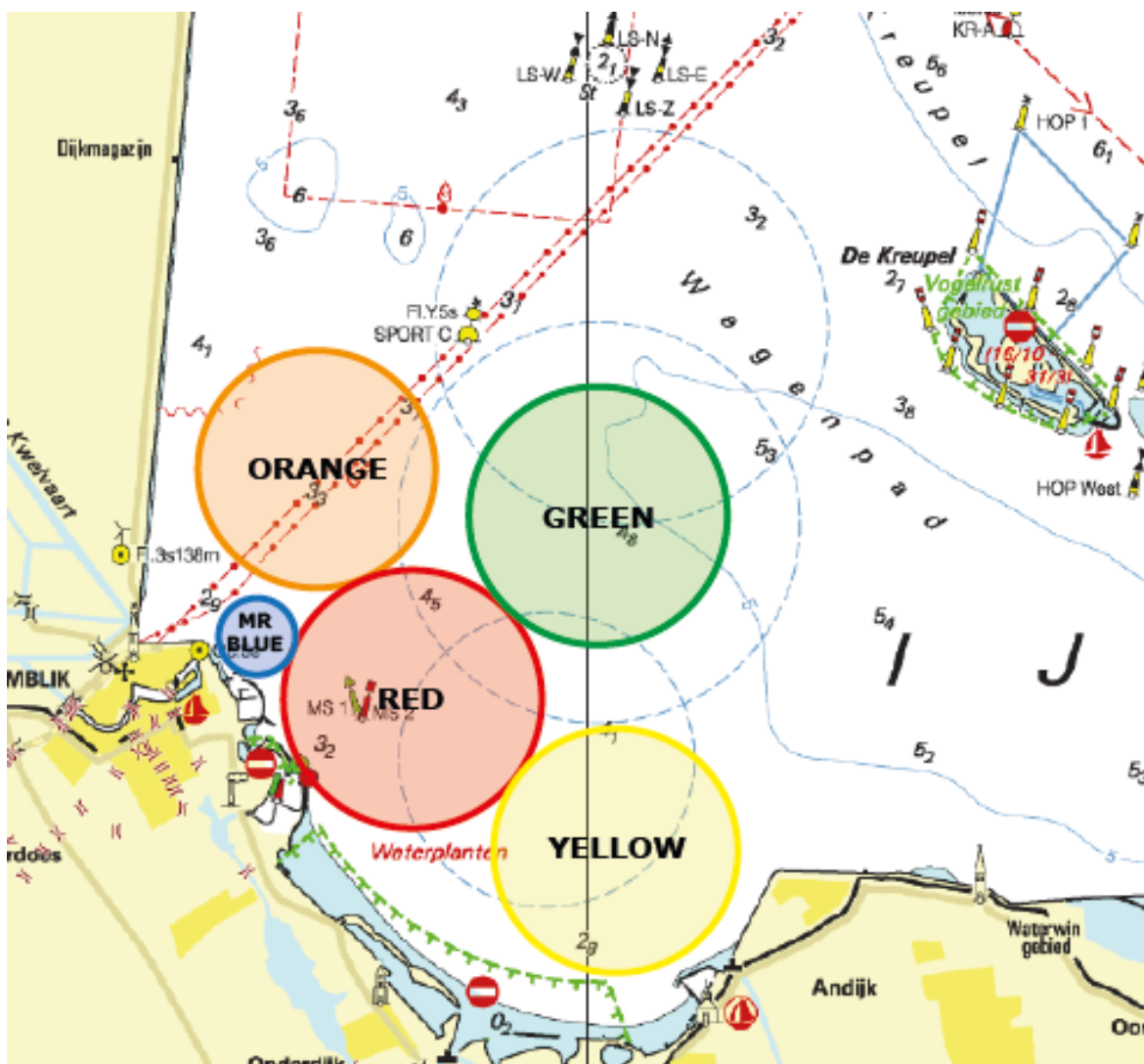
Principal Race Officer:	Joost Brouwer
Race Officer Orange Course:	Arie-Jan Snel
Race Officer Red Course:	Remco de Goederen
Race Officer Green Course:	Marcol de Klerk
Race Officer Yellow Course:	Alex Hoeve
Chairman of the protest committee:	John Borsboom



**ATTACHMENT A**

**Locations of Course Areas**

Course Area	Approximate distance (NM)	Approximate course
Blue – (Match races)	0.1	10°
Orange	1.1	15°
Red	0.8	85°
Green	1.9	75°
Yellow	1.9	110°





**ATTACHMENT B**

**Race Schedule  
FRIDAY**

<b>Course Orange</b> HOLLANDIA Arie-Jan Snel Laser / Laser R / Laser 4.7 / Finn				<b>Course Green</b> WSV WOLPHAARTSDIJK Marcol de Klerk Melges24 / SB20 / J22 / Yngling				<b>Course Yellow</b> SAILSERVICE Alex Hoeve 49er(FX) / 29er / RS500				<b>Course Red</b> HOLLAND REGATTA CLUB Remco de Goederen Contender / Moth / F18				<b>Course Blue</b> DMTRA Matchracing	
<b>10:30</b>	Finn	R1	OLU					<b>11:00</b>	49er	R1	LRA2					<b>10:30</b>	First flight
	Laser	R1	OLU						49FX	R1	LRA2	<b>11:30</b>	Contender	R1	OL		Continues Racing
	Laser R	R1	ILU						29er	R1	LR2	asap	Contender	R2&R3	OL		
	Laser 4.7	R1	ILU						RS500	R1	LR2						
asap	Finn	R2&R3	OLU	<b>13:00</b>	Melges24	R1	LA3	asap	49er	R2-R5	LRA2						
asap	Laser	R2&R3	OLU		SB20	R1	LA3	asap	49FX	R2-R5	LRA2						
asap	Laser R	R2&R3	ILU		Yngling	R1	LA2	asap	29er	R2-R5	LR2	<b>15:00</b>	Moth	R1	LA2		
asap	Laser 4.7	R2&R3	ILU	asap	Melges24	R2&R3	LA3	asap	RS500	R2-R5	LR2	asap	Moth	R2&R3	LA2		
					SB20	R2&R3	LA3										
					Yngling	R2&R3	LA2										
					J22	R2&R3	LA2										

**Note: All times are time of first Warning Signal**

OL=OUTERLOOP

OLU=OUTERLOOP UPWIND FINISH

IL=INNERLOOP

ILU=INNERLOOP UPWIND FINISH

L=UPWIND-DOWNWIND

LR=UPWIND-DOWNWIND REACH FINISH

LA=UPWIND(SPREADER)-DOWNWIND





## SATURDAY

Course Orange HOLLANDIA Arie-Jan Snel Laser / Laser R / Laser 4.7 / Finn				Course Green WSV WOLPHAARTSDIJK Marcol de Klerk Melges24 / SB20 / J22 / Yngling				Course Yellow SAILSERVICE Alex Hoeve 49er(FX) / 29er / RS500				Course Red HOLLAND REGATTA CLUB Remco de Goederen Contender / Moth / F18				Course Blue DMTRA Matchracing					
<b>10:30</b>	Finn	R4	OLU		<b>11:00</b>	Melges24	R4	LA3	<b>10:00</b>	49er	R6	LRA2		<b>09:30</b>	First Flight						
	Laser	R4	OLU			SB20	R4	LA3	49FX	R6	LRA2	<b>11:00</b>			F18	R1	OL	Continues			
	Laser R	R4	ILU			Yngling	R4	LA2	29er	R6	LR2				Contender	R4	IL	Racing			
	Laser 4.7	R4	ILU			J22	R4	LA2	RS500	R6	LR2										
asap	Finn	R5&R6	OLU						asap	49er	R7-R10	LRA2			asap	F18	R2-R4	OL			
asap	Laser	R5&R6	OLU			asap	Melges24	R5&R6	LA3	asap	49FX	R7-R10			LRA2	asap	Contender	R5&R6	IL		
							SB20	R5&R6	LA3												
asap	Laser R	R5&R6	ILU				Yngling	R5&R6	LA2	asap	29er	R7-R10			LR2						
							J22	R5&R6	LA2							<b>15:00</b>	Moth	R4	LA2		
asap	Laser 4.7	R5&R6	ILU							asap	RS500	R7-R10			LR2	asap	Moth	R5-R7	LA2		

**Note: All times are time of first Warning Signal**

OL=OUTERLOOP

OLU=OUTERLOOP UPWIND FINISH

IL=INNERLOOP

ILU=INNERLOOP UPWIND FINISH

L=UPWIND-DOWNWIND

LR=UPWIND-DOWNWIND REACH FINISH

LA=UPWIND(SPREADER)-DOWNWIND



## SUNDAY

<b>Course Orange</b> HOLLANDIA Arie-Jan Snel Laser / Laser R / Laser 4.7 / Finn	<b>Course Green</b> WSV WOLPHAARTSDIJK Marcol de Klerk Melges24 / SB20 / J22 / Yngling	<b>Course Yellow</b> SAILSERVICE Alex Hoeve 49er(FX) / 29er / RS500	<b>Course Red</b> HOLLAND REGATTA CLUB Remco de Goederen Contender / Moth / F18	<b>Course Blue</b> DMTRA Matchracing
<b>10:30</b> Finn R7 OLU Laser Standard R7 OLU Laser Radial R7 ILU Laser 4.7 R7 ILU asap Finn R8 OLU asap Laser Standard R8 OLU asap Laser Radial R8 ILU asap Laser 4.7 R8 ILU	<b>11:00</b> Melges24 R7 LA3 SB20 R7 LA3 Yngling R7 LA2 J22 R7 LA2 asap Melges24 R8&R9 LA3 SB20 R8&R9 LA3 Yngling R8&R9 LA2 J22 R8&R9 LA2	<b>11:00</b> 49er R11 LRA2 49FX R11 LRA2 29er R11 LR2 RS500 R11 LR2 asap 49er R12-R15 LRA2 asap 49FX R12-R15 LRA2 asap 29er R12-R15 LR2 asap RS500 R12-R15 LR2	<b>10:00</b> F18 R4 OL Contender R7 IL asap F18 R5-R8 OL asap Contender R8&R9 IL <b>13:30</b> Moth R8 LA2 asap Moth R9-R10 LA2	<b>09:30</b> First Flight Continues Racing

**Note: All times are time of first Warning Signal**

OL=OUTERLOOP

IL=INNERLOOP

L=UPWIND-DOWNWIND

LA=UPWIND(SPREADER)-DOWNWIND

OLU=OUTERLOOP UPWIND FINISH

ILU=INNERLOOP UPWIND FINISH

LR=UPWIND-DOWNWIND REACH FINISH




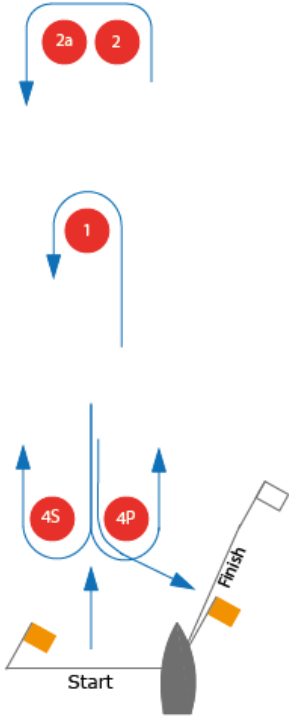
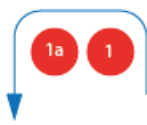
**ATTACHMENT C**

**Courses**

<b>OLU – Outerloop Upwind Finish</b>	<b>ILU – Innerloop Upwind Finish</b>
<p>Start – 1 – 2 – 3S/3P – 2 – 3S/3P – 5 – Finish</p>	<p>Start – 1 – 4S/4P – 1 – 2 – 3P – 5 – Finish</p>
<p>Finishing Marks: A race committee vessel at the starboard-end and a dan buoy at the port-end</p>	

<b>O - Outerloop</b>	<b>I - Innerloop</b>
<p>Start – 1 – 2 – 3S/3P – 2 – 3P – Finish</p>	<p>Start – 1 – 4S/4P – 1 – 2 – 3P – Finish</p>
<p>Finish Marks: A race committee vessel at the port-end and a dan buoy at the starboard-end</p>	



L/LA – Upwind/Downwind	LR/LRa – Upwind/Downwind, reach finish
	
	
<p>L2: Start – 1 – 4S/4P – 1 – Finish            L3: Start – 1- 4S/4P – 1 – 4S/4P – 1 - Finish</p>	<p>LR: Start – 1- 4S/4P – 1 – 4P – Finish</p>
<p>LA2: Start – 1 – 1a – 4S/4P – 1 – 1a – Finish            LA3: Start – 1 – 1a – 4S/4P – 1 – 1a – 4S/4P – 1 – 1a - Finish</p>	<p>LRA: Start – 2 – 2a – 4S/4P – 2 – 2a – 4P – Finish</p>
<p>Finish Marks: Same as starting marks</p>	<p>Finish Marks: A Black Checkered Mark at the starboard-end and the race committee signal vessel at the port-end</p>